

Bike Course

The bike course is on Tarmac, and it consists of laps along the `old` sea front closed road

Tristar Start 1 x TSS turn around point = Approx. total 1.5k

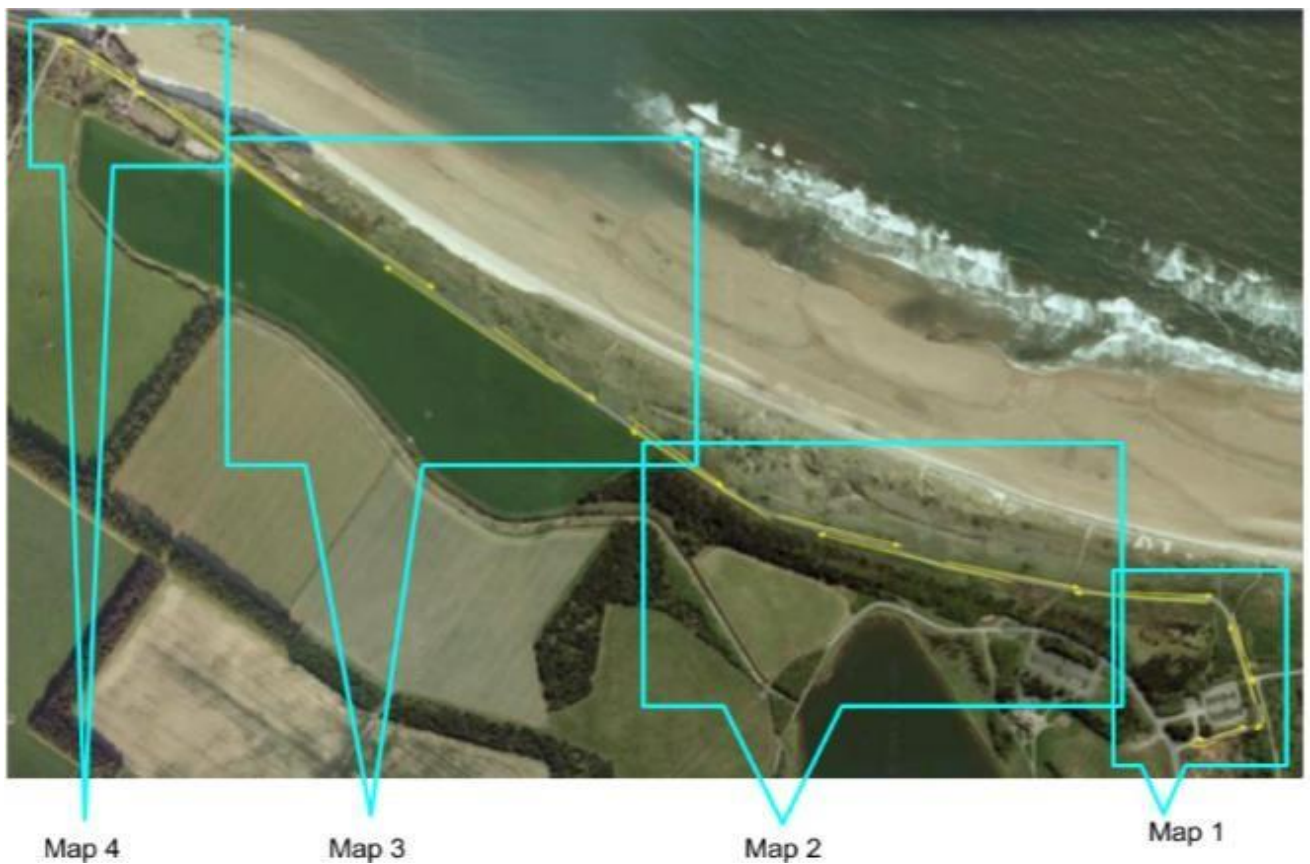
Tristar 1 – 1 x big lap = Approx. total 3K

Tristar 2 – 1 x 1.5k big lap plus 1 x Short (TSS) lap = Approx. total 5K

Tristar 3 – 2 x 1.5k Big laps plus 1 x Short (TSS) Lap = Approx. total 7.5 K

It is the competitor's responsibility to ensure that they complete the required laps, although Marshals will be positioned at the important turnaround points for each age group event.

The Course



Map1



Map 2

TSS Turn Around Point



Map 3

Map4

